

## IV

*Postea cantatur ¶. Crux fidelis, cum hymno Pange, lingua, glóriosi, ut sequitur (vel in textu antiquo, 236), et post quemlibet ejus versum repetitur Crux fidelis, vel Dulce lignum, eo modo quo inferius notatur.*

I.

**C** Rux fidé- lis, inter omnes Arbor una nó-bi- lis :

Nulla silva ta-lem pro-fert, Fronde, flo-re, gérmi-ne :

\* Dulce lignum, dulces clavos, Dulce pondus sústi-net.

Hymn.

I.

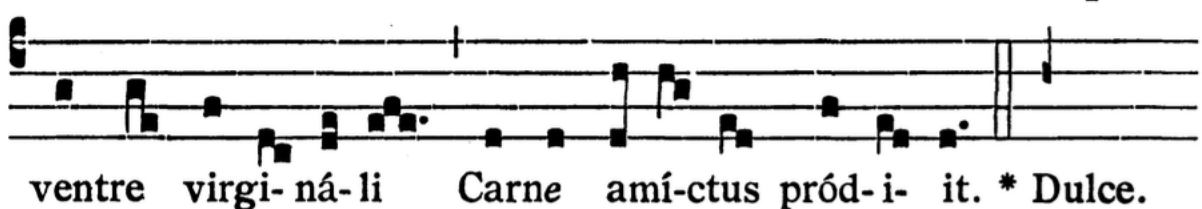
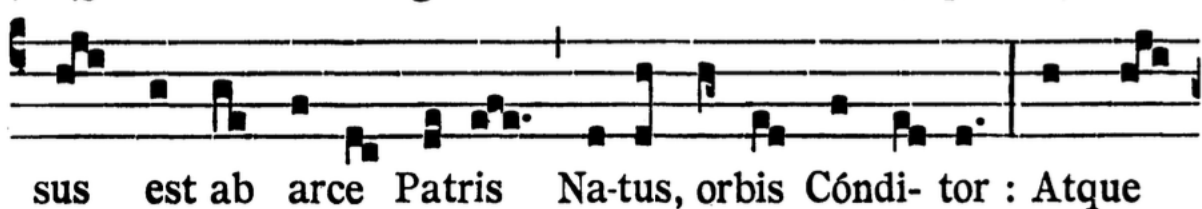
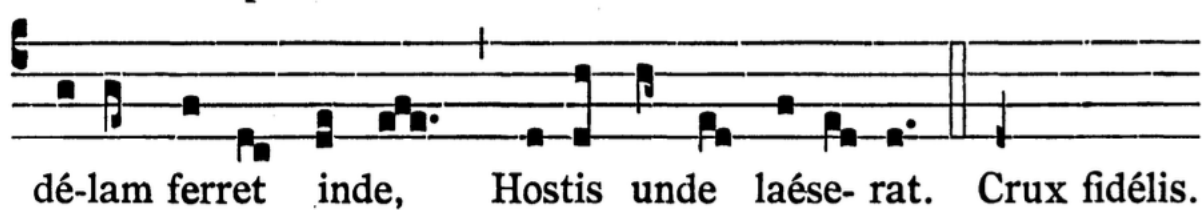
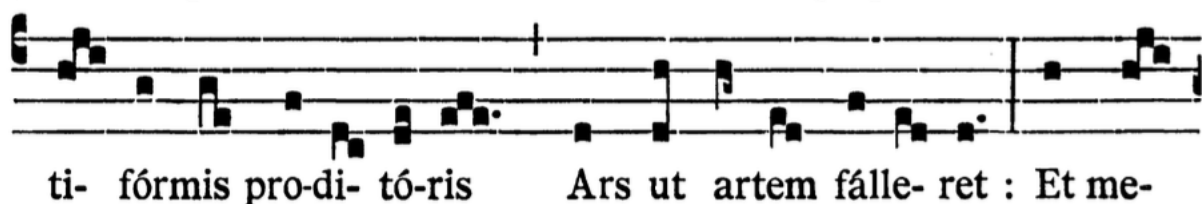
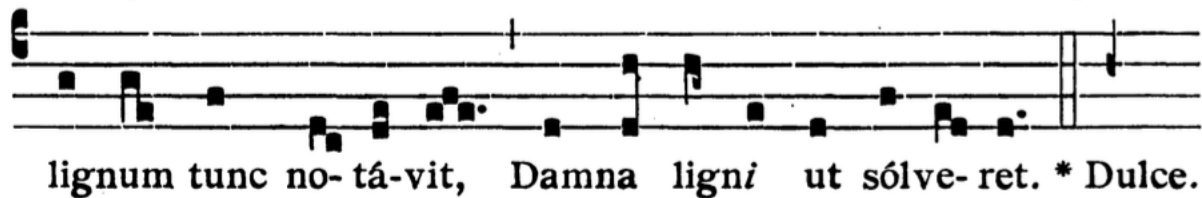
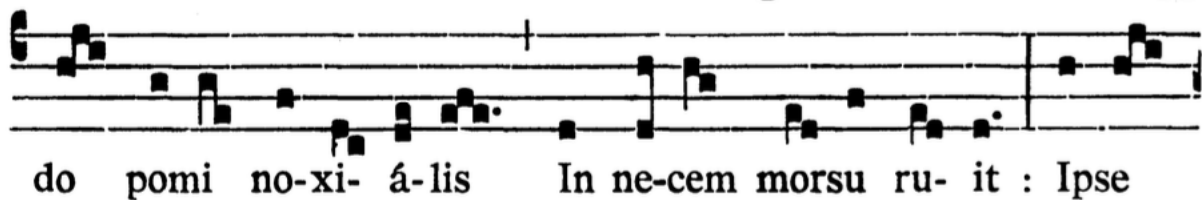
**P** Ange, lingua, glo-ri- ó- si Láure-am certámi-nis,

Et su- per Cru- cis trophaé-o Dic tri- úmphum nó-bi- lem :

Quá-li- ter Red-émptor orbis Immo-lá- tus ví-ce- rit.

*Repetitur Crux fidelis, usque ad \* Dulce lignum.*

¶. De pa-réntis pro-toplá-sti Fraude Factor cón-do- lens, Quan-






bra pannis invo-lú-ta Virgo Ma-ter ál-li-gat : Et



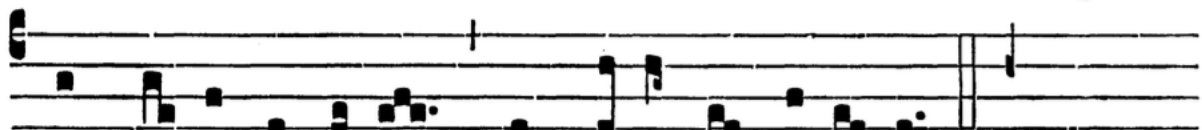
De-i ma-nus, pe-désque Stricta cingit fásci-a. Cru-x.



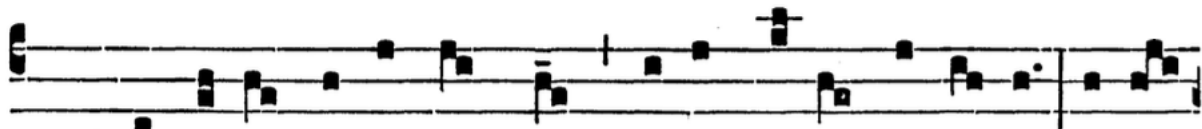
∇. Lustra sex qui jam per-é-git, Tempus implens córpo-ris,




Sponte lí-be-ra Red-émptor Passi-ó-ni dé-di-tus, Agnus



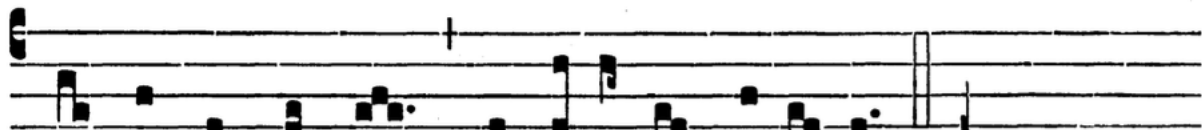
in Cru-cis le-vá-tur Immo-lándus stí-pi-te. \* Dulce.



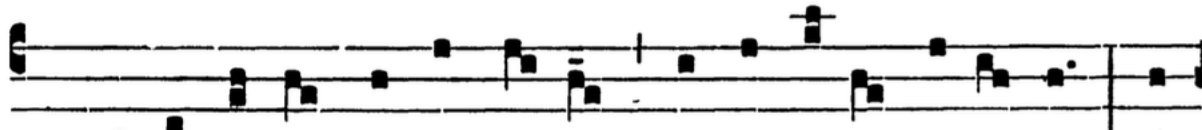
∇. Felle po-tus ecce languet : Spi-na, cla-vi, lánce-a : Mi-te



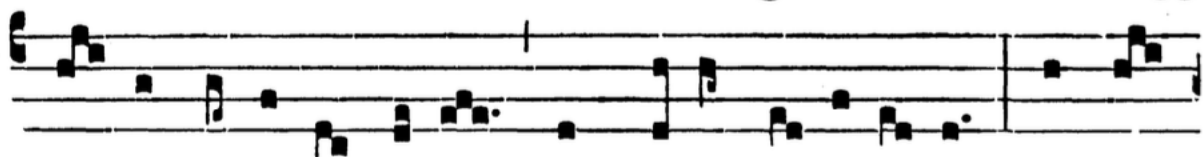
corpus perfo-rá-runt, Unda ma-nat et cru-or : Terra, pon-



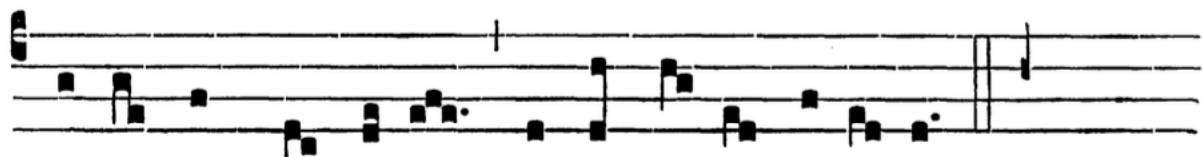
tus, astra, mundus, Quo lavántur flúmi-ne! Cru-x fidélis.



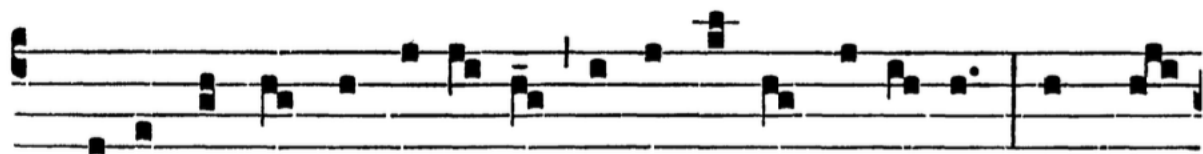
∇. Flecte ramos, arbor al-ta, Tensa laxa vísce-ra, Et



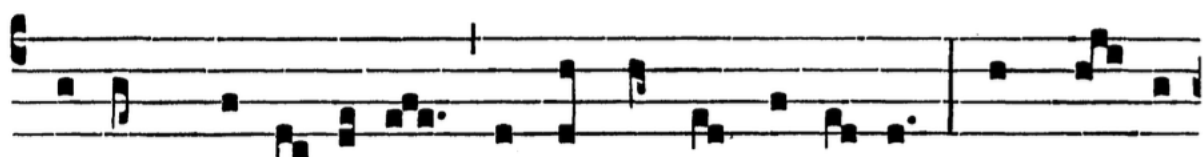
ri- gor lentéscat il-le, Quem de-dit na- tí- vi- tas : Et su-



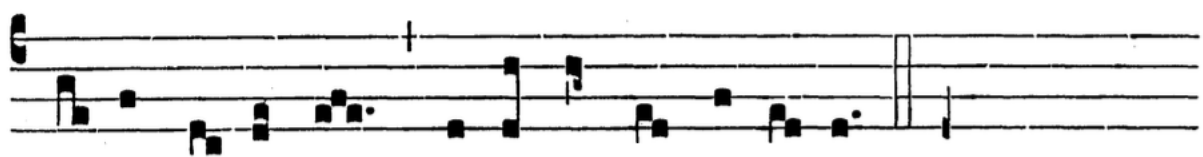
pérni membra Re-gis Tende mi- ti stí- pi- te. \* Dulce.



∇. So- la digna tu fu- í- sti Ferre mundi Vícti- mam : Atque

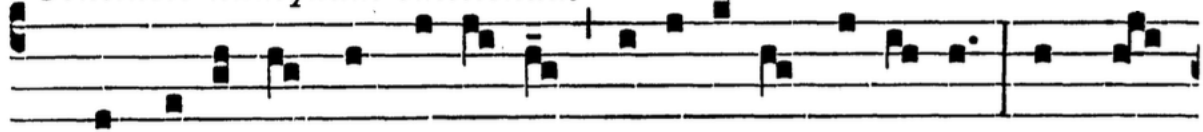


portum praepa- rá- re Arca mundo náufra- go : Quam sa- cer



cru- or per- únxit, Fu- sus Agni córpo- re. Crux fidélis.

*Conclusio numquam omittenda.*



∇. Sempí- térna sit be- á- tae Tri- ni- tá- ti gló- ri- a : Æqua



Patri, Fi- li- óque; Par de- cus Pa- rácli- to : Uní- us Tri-



níque nomen Laudet u- ni- vérsi- tas. A- men. \* Dulce.